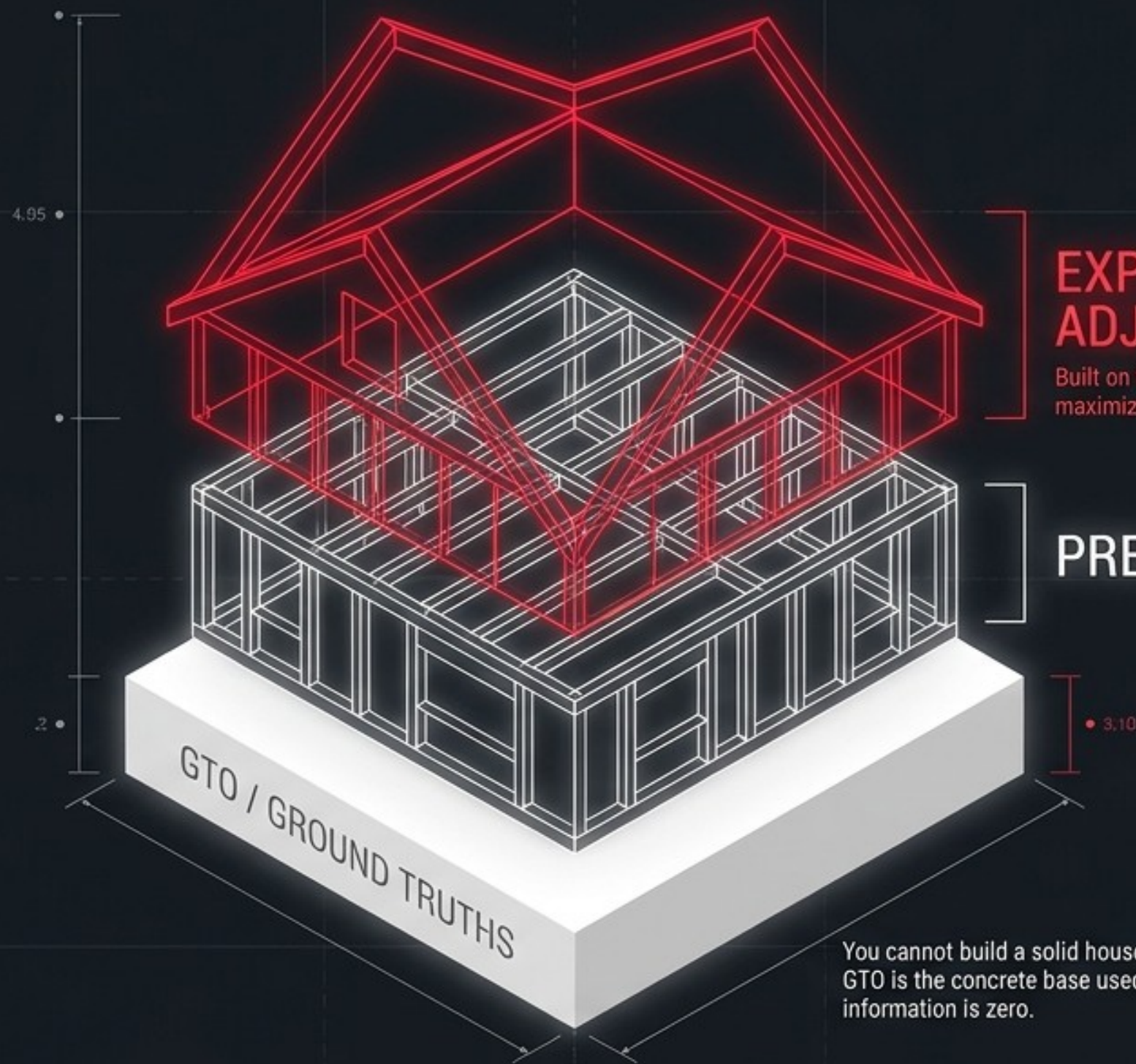




The Master Architect

Building a Bulletproof Poker Strategy from First Principles



EXPLOITATIVE ADJUSTMENTS

Built on top of the foundation to maximize edge and extract profit.

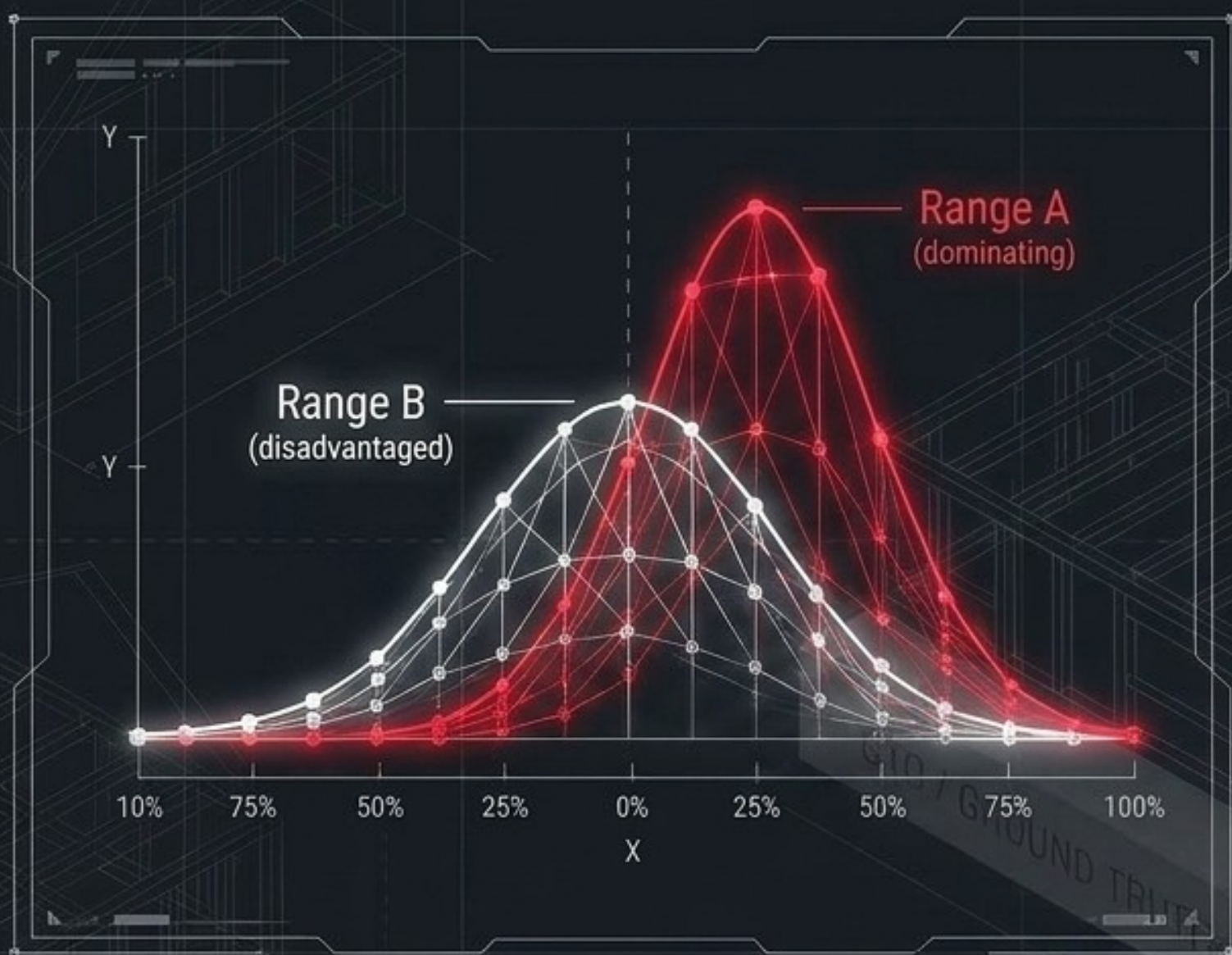
PRE-FLOP MASTERY

GTO / GROUND TRUTHS

You cannot build a solid house on sand. GTO is the concrete base used when information is zero.

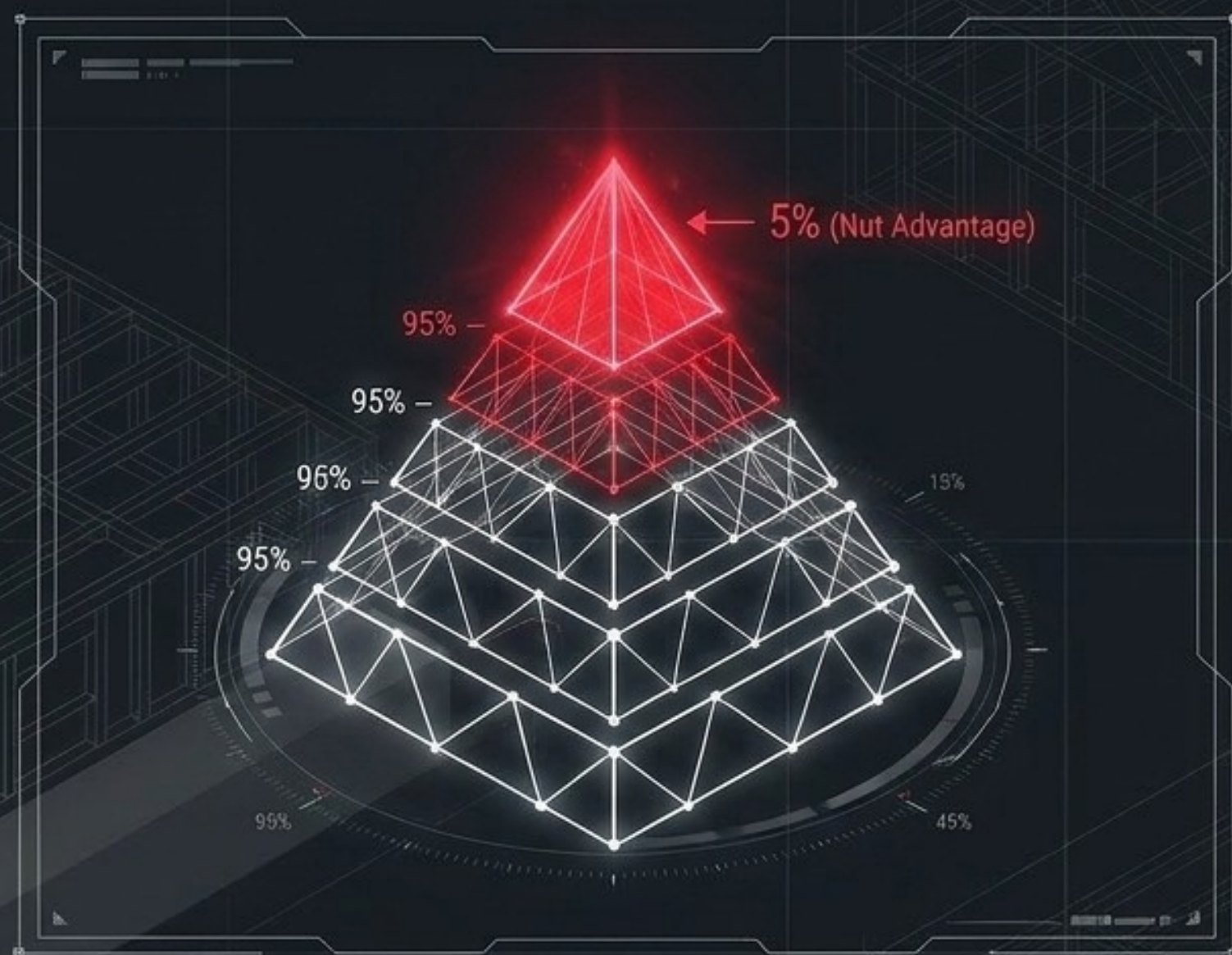
KEY TAKEAWAY: Mastery requires both. GTO creates the indestructible base; Exploits build the profit.

First Principles: The Ground Truths



Range Advantage

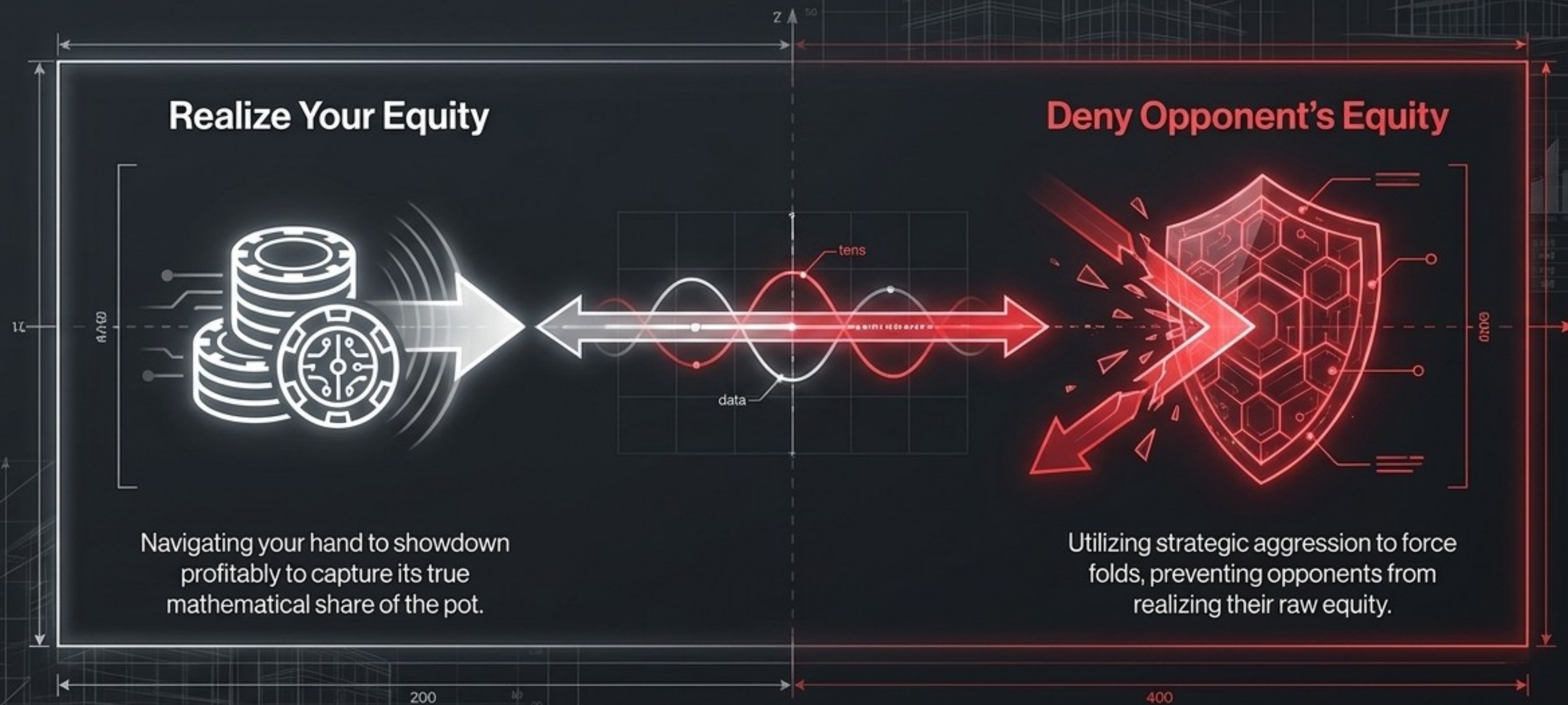
Dictates action. The player with the overall range advantage bets; the disadvantaged range checks.



Nut Advantage

Dictates sizing. Holding the highest concentration of the absolute best hands allows for maximum pressure. If you have Range Advantage but lack Nut Advantage, you must downsize.

The Universal Objective: The Physics of Poker



Pre-Flop Mastery: The Cost of Tightness

VPIP: 24% | PFR: ~20% | 3-Bet: 9.7%



The GTO Optimum

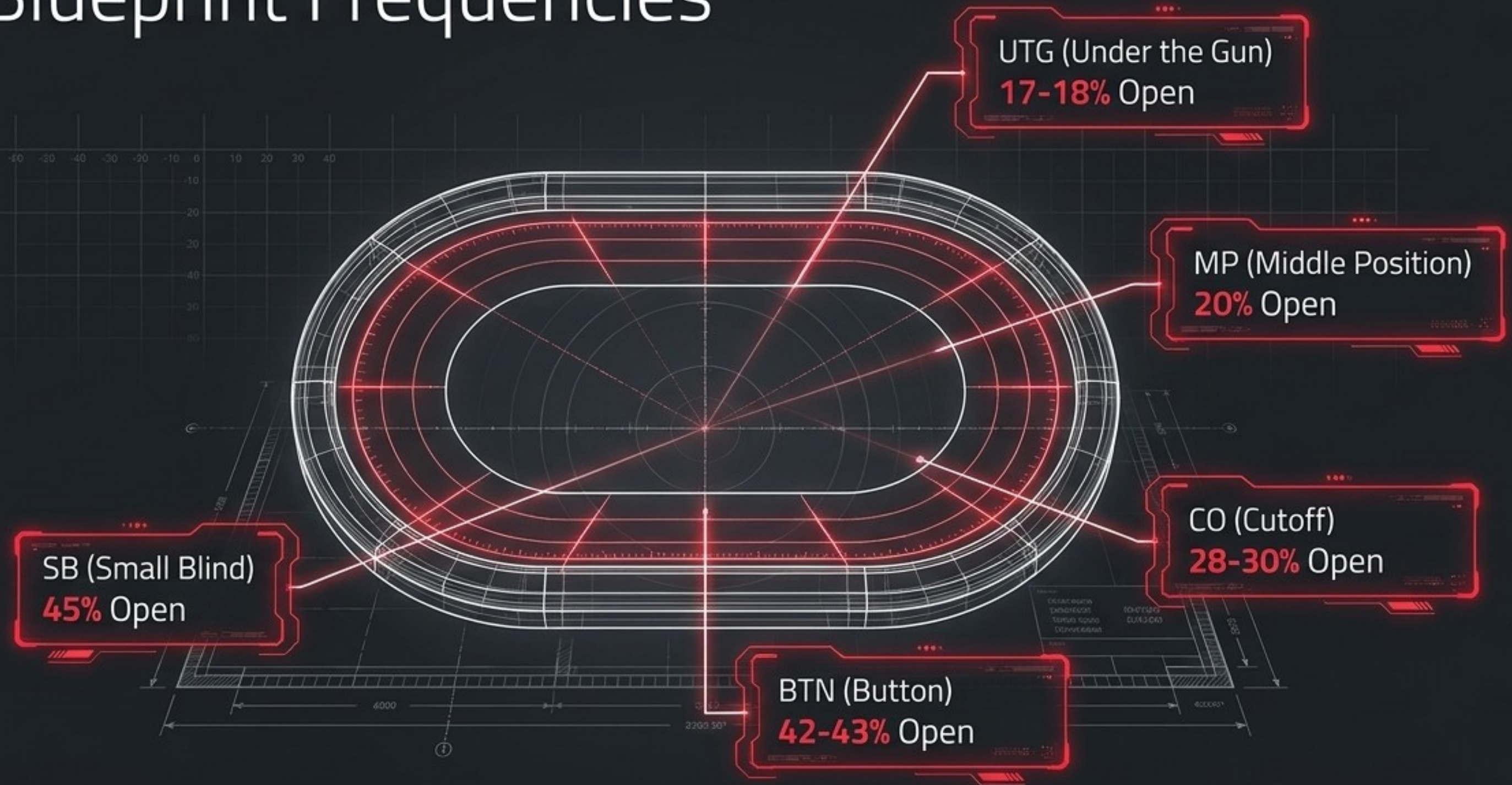
VPIP: 20% | PFR: 16% | 3-Bet: 7.8%



The Nitty Leak

Folding a marginal, merge hand that has positive Expected Value (+EV) is a massive, invisible leak. Every folded +EV hand (like a suited connector to a standard raise) is mathematically burning chips.

The Blueprint Frequencies



RULE: These ranges consist of hands guaranteed to realize equity profitably, regardless of table dynamics. Stick to the blueprint.

Post-Flop Defense: The 5-Outer Rule

The Math

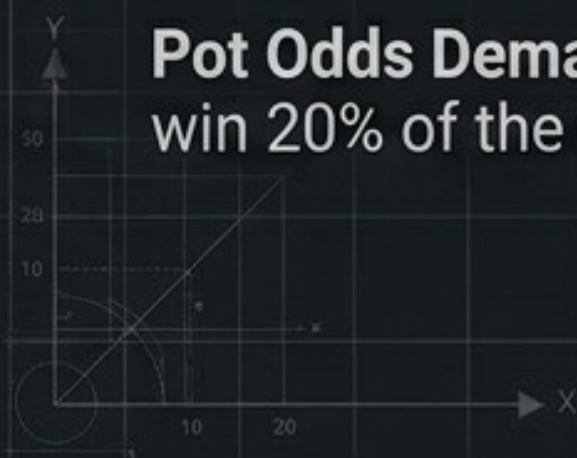
$$D(x) = \frac{(1 + B)(1 + 1)B}{3} = 1/3 \text{ Pot}$$

Pot Odds

$$\begin{aligned} \text{Min \%} &= \frac{20\%}{1/3} \\ &= \frac{2}{10} \times \frac{20}{26} \end{aligned}$$

Opponent C-Bets 1/3 Pot

Pot Odds Demand: You only need to win 20% of the time to profitably call.



$$E_1 = \frac{13 + 20\%}{13} = 1.100\%$$

The Rule



Defend
Threshold

Never fold a 5-Outer.

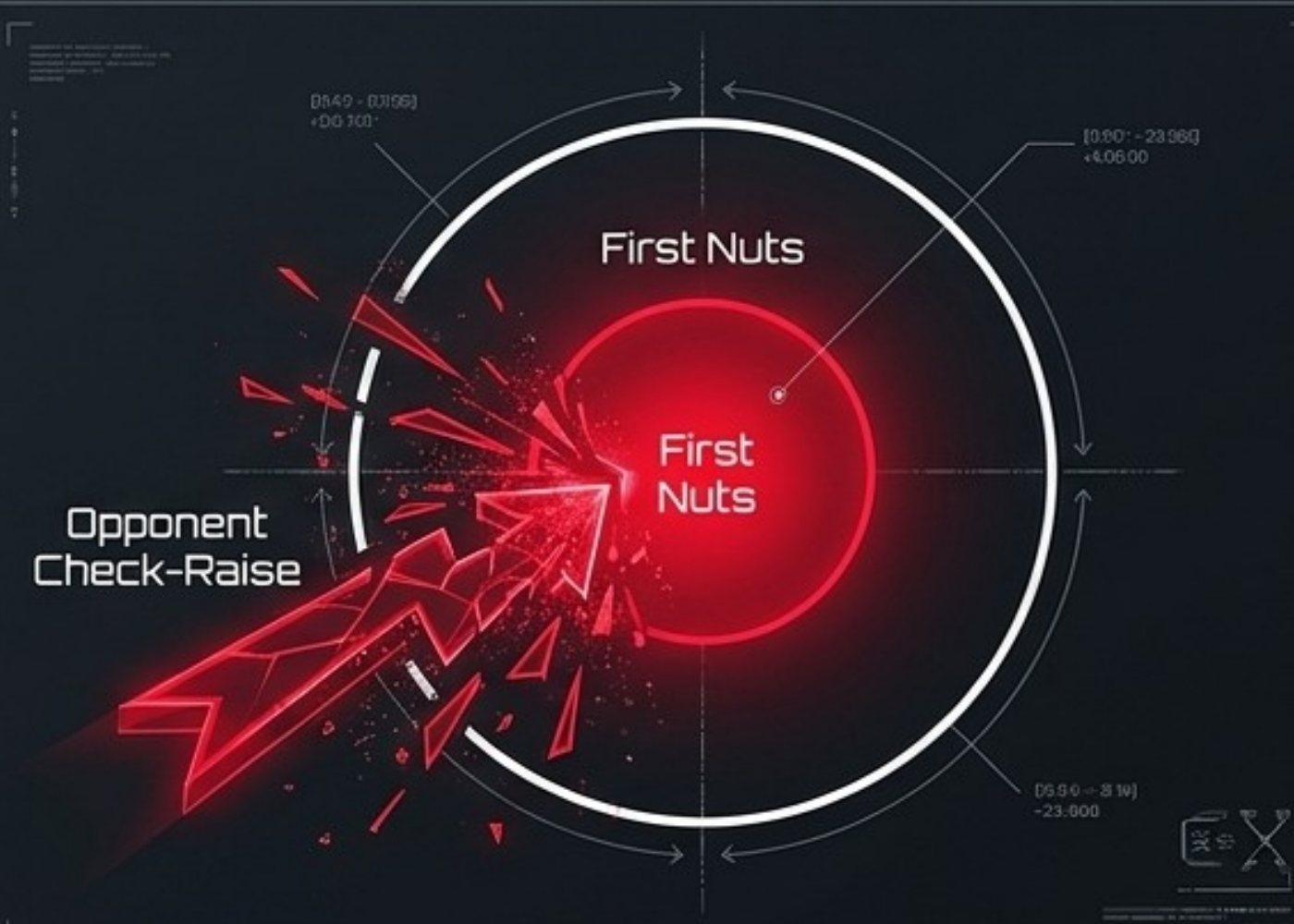
If you hold the lowest pair plus backdoor outs, you mathematically eclipse the 20% equity threshold against a 1/3 pot c-bet. Defend the threshold.

Post-Flop Offense: Size Protection Logic

Scenario A: The Unprotected Bet



Scenario B: The Protected Bet

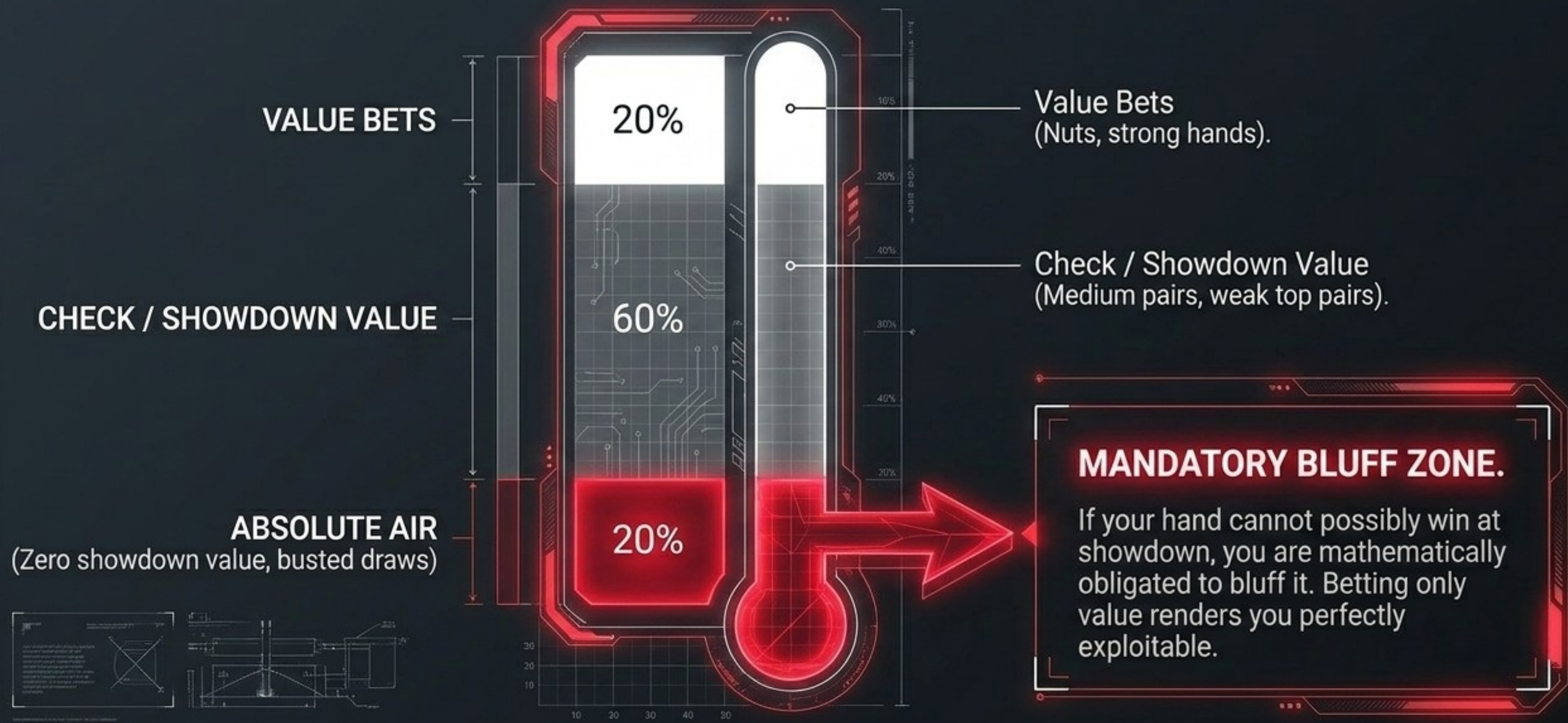


VULNERABLE: If you only use 10x overbets for your absolute first nuts (e.g., a straight), your standard pot bets are completely capped. Opponents will exploitably check-raise all-in to deny your equity.

BULLETPROOF: You must map a portion of your first nuts into your standard sizing. This "protects" the size, paralyzing the opponent's ability to check-raise bluff you.

River Strategy: The Bluffing Imperative

B3.40-12.059



Advanced Exploits: Node Locking

Lock Node:
Opponent Over-Folds
to Turn Over-Bets



When we deviate from the GTO foundation, we do so systematically. If an opponent's baseline leaks (e.g., over-folding to pressure), we artificially lock their mistake into our model, generating an optimal, over-bluffing counter-strategy.

The Exploit Spectrum

Min Exploit



Action: Sticking strictly to GTO despite opponent's clear mistakes.



Result: Safe, but leaves massive EV (Expected Value) on the table.

Max Exploit



Action: Calling down an over-bluffer with the absolute bottom of your range (e.g., A-high).



Result: Extracts maximum immediate value, but tips your hand at showdown. Opponent adapts and your future edge is destroyed.

The Medium Exploit

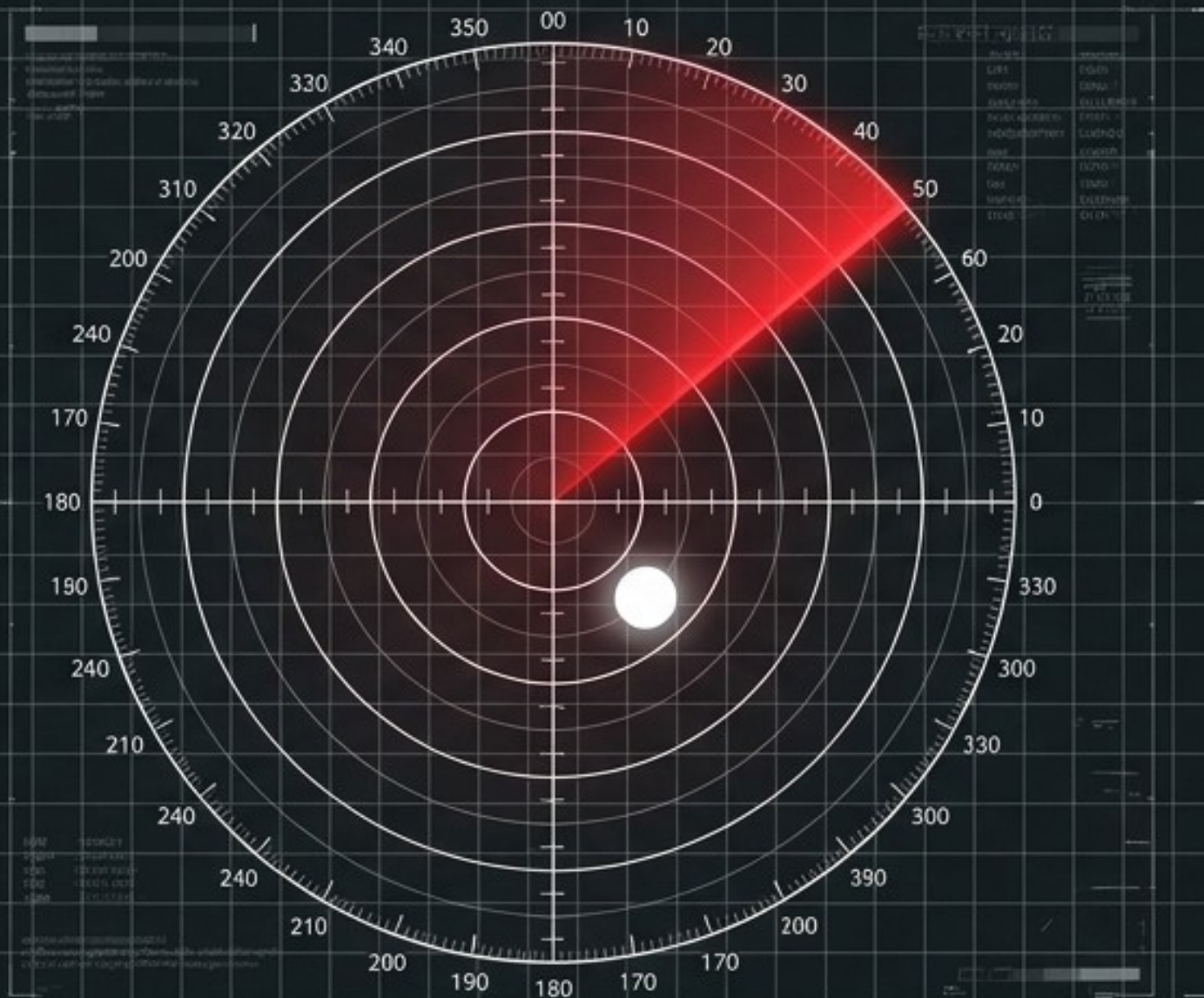


Action: Exploiting heavily, but restricting calls to hands with standard showdown value.



Result: Maximum extraction combined with maximum camouflage.

Mastery: The Medium Exploit



The Professional's Secret

Call an over-bluffing opponent as wide as you can, *only* with hands you aren't ashamed to show at showdown (e.g., top pair, mid-pair bluff catchers).

The Psychological Camouflage

When they see your standard bluff catcher, they chalk their loss up to bad luck. They never realize they are being systematically exploited, allowing them to bleed chips to you indefinitely.

Extract Maximum Value. Maintain Maximum Camouflage.

